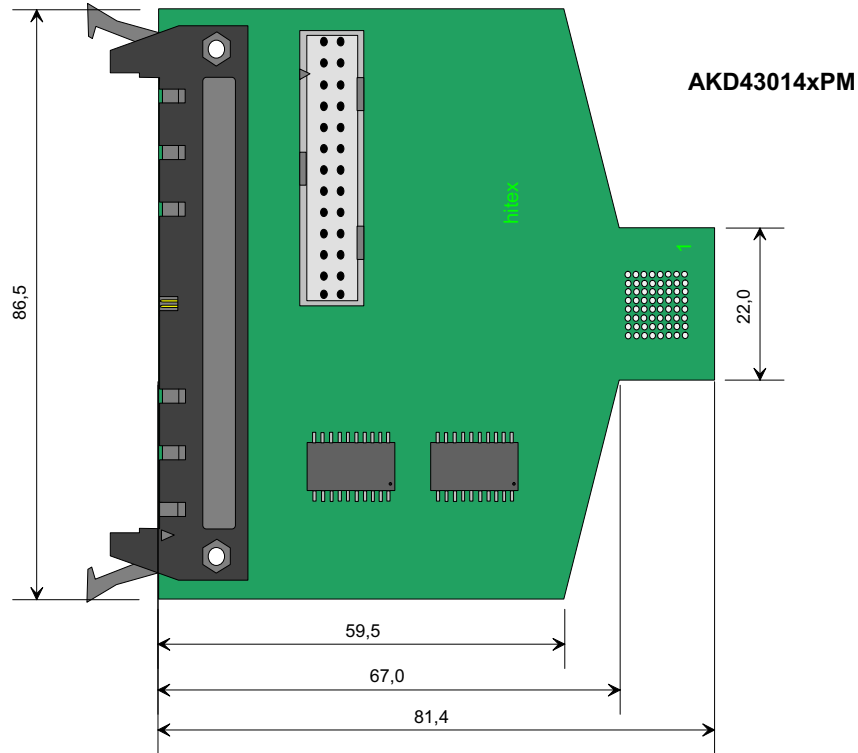


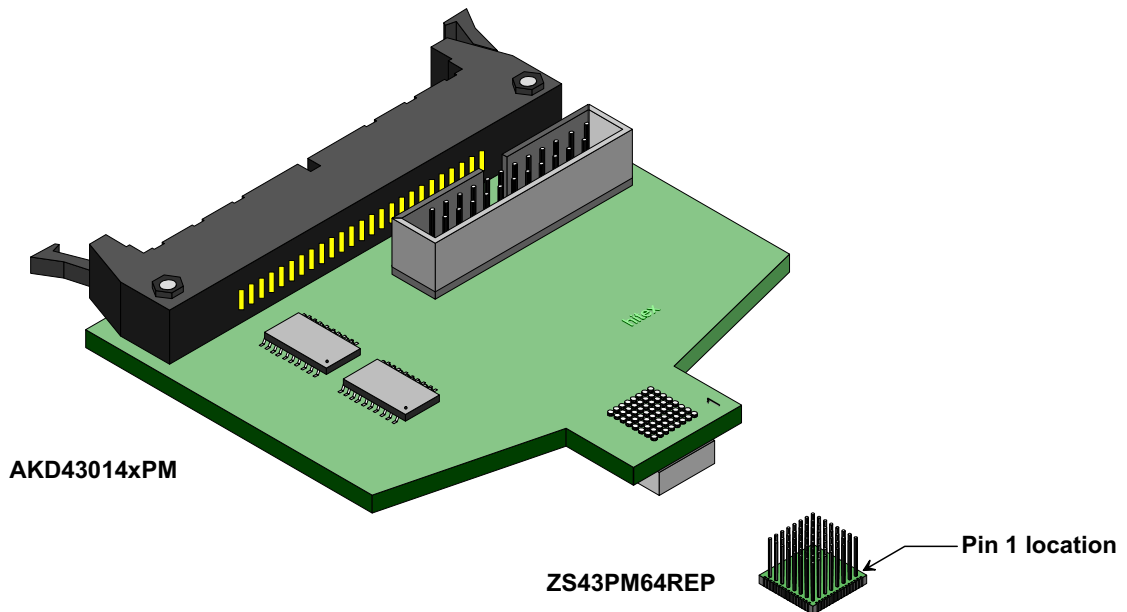
S-PQFP64 Replacement Adapter for Texas Instruments MSP43014xPM  
 Adapter DProbe430 PQFP64 Replacement MSP43014xPM  
 Part No.: AKD43014xPM, (ZS43PM64REP)

**Top view**



Top Connection: Emulator DProbe430  
 Bottom Connection: PQFP64 Solder Base: **ZS43PM64REP** for CPU MSP430x14xPM (must be ordered separately)

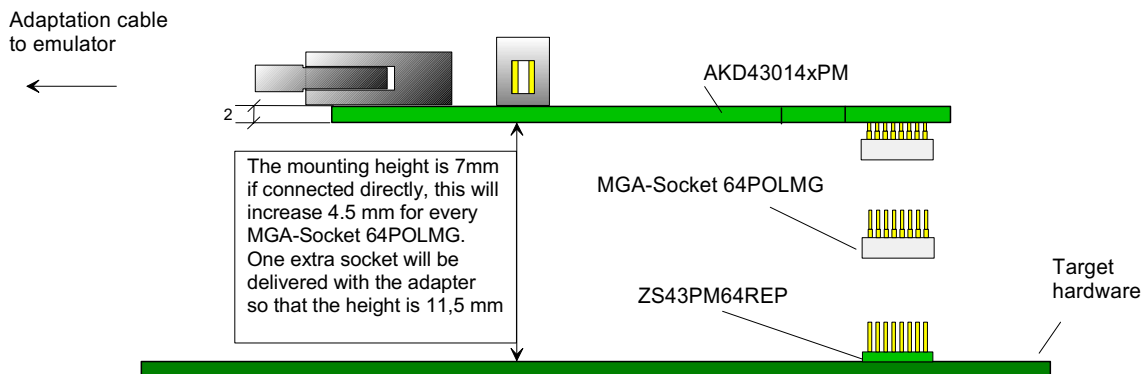
**3D view**



Note: The ZS43PM64REP is a Replace Adapter which must be soldered at the target hardware instead of the CPU. The adapter has no pin 1 marking, because the ZS43PM64REP is symmetrical. The pin 1 marking of the AK43014xPM must be in the same position as the pin 1 location of the CPU layout in the target hardware.

S-PQFP64 Replacement Adapter for Texas Instruments MSP43014xPM  
 Adapter DProbe430 PQFP64 Replacement MSP43014xPM  
 Part No.: AKD43014xPM, (ZS43PM64REP)

Side view



Note: The ZS43PM64REP is a Replace Adapter which must be soldered at the target hardware instead of the CPU. The adapter has no pin 1 marking, because the ZS43PM64REP is symmetrical. The pin 1 marking of the AK43014xPM must be in the same position as the pin 1 location of the CPU layout in the target hardware.