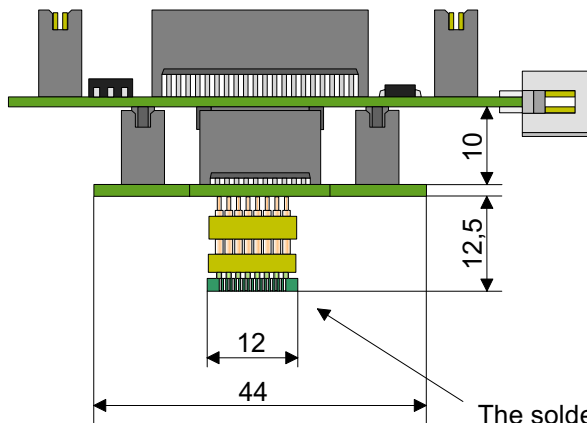


Replacement Adapter for Infineon XC164CM with TQFP-64 Footprint (Solder-In)
Adapter Set Replacement XC164 QC144-TQFP64
Part No. DZS-XC164CM-T64-REP

Top Connection : QC144 for DProbeXC

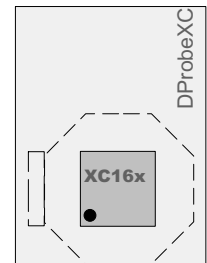
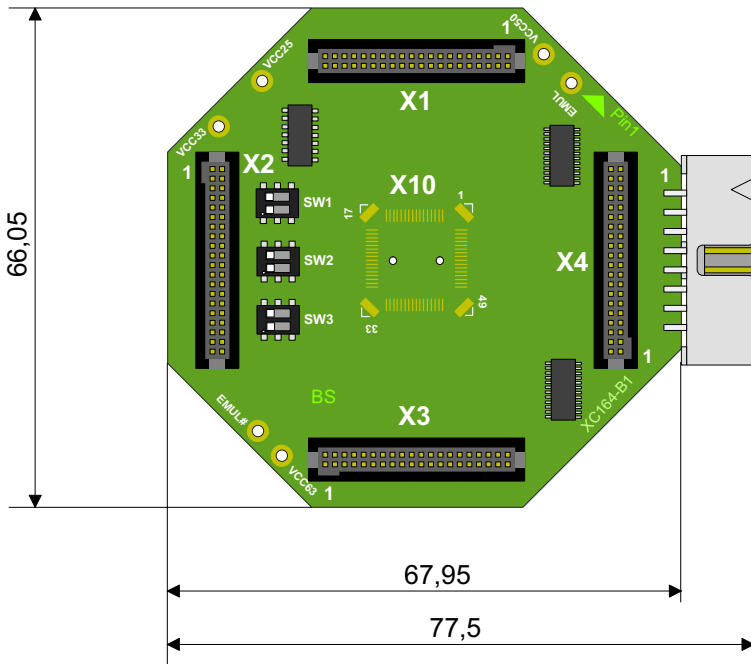
Bottom Connection : TQFP-64 Footprint for Infineon XC164CM

Side view:



The solder base (lower section) may be ordered separately. Part No.: SOTQ64-050-MGA

Configurator Top view:



Note 1: The solder base has a rotational symmetry and may be mounted in arbitrary direction using e.g. reflow equipment.

<p>Jumper-Settings for the DProbe 167- C164CS Configurator Adapter QC144-QC100T for XC164CS Part-No. DZS-XC164-T100-QC</p>

On the XC164 in 100 pin package, 4 JTAG pins and the two break pins are overlaid on GPIO pins. Using the jumpers listed below the configurator can be configured to connect the necessary JTAG signals and break pins for the use of a JTAG debugger by connecting the dedicated pins of the target processor to the the 16pin JTAG connector.

DIP Switch	Position	XC164 Pin	Usage
SW1-1(TCK)	PORT	P3.1	P3.1 as I/O or T6OUT 0r RxD1
	JTAG	TCK	JTAG (connected to TCK on 16pin JTAG connector)
SW1-2(TDI)	PORT	P3.2	P3.1 as I/O or CAPIN
	JTAG	TDI	JTAG (connected to TDI on 16pin JTAG connector)
SW2-1(TDO)	PORT	P3.3	P3.3 as I/O or T3OUT
	JTAG	TDO	JTAG (connected to TDO on 16pin JTAG connector)
SW2-2(TMS)	PORT	P3.4	P3.4 as I/O or T3EUD
	JTAG	TMS	JTAG (connected to TMS on 16pin JTAG connector)
SW3-1(BRKIN#)	PORT	P3.5	P3.5 as I/O or T4IN or TxD1
	BRK	BRKIN#	JTAG (connected to BRKIN# on 16pin JTAG connector)
SW3-2(BRKOUT#)	PORT	P3.6	P3.6 as I/O or T2IN
	BRK	BRKOUT#	JTAG (connected to BRKOUT# on 16pin JTAG connector)