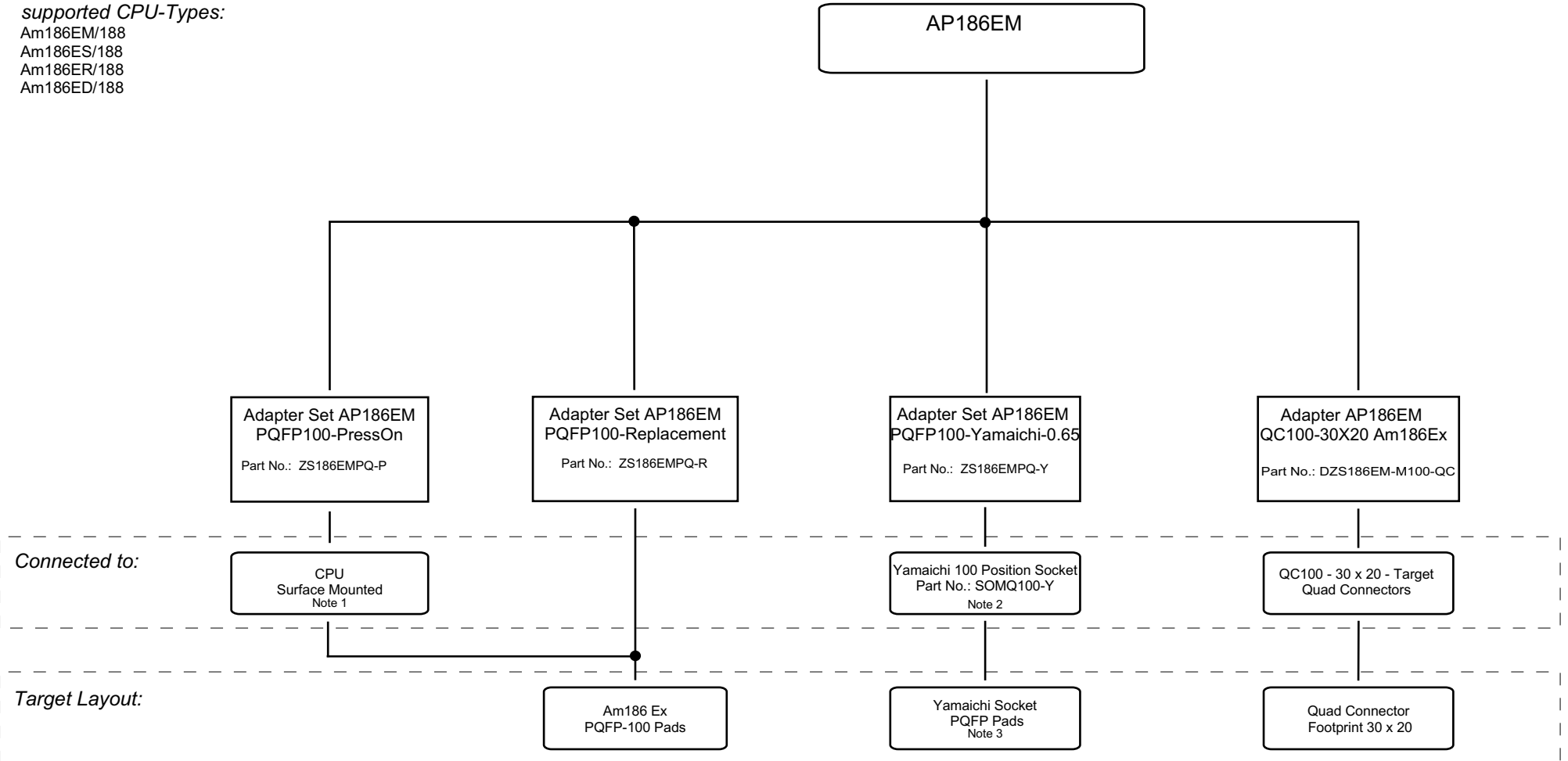


# AMD Am186EM /ES /ER /ED PQFP-100

## Adaptation Scheme for AX186 with AP186EM

*supported CPU-Types:*

- Am186EM/188
- Am186ES/188
- Am186ER/188
- Am186ED/188



Note 1: Target CPU is disabled by the LCS/ and UCS/ signals

Note 2: Yamaichi part number: IC149-100-014-B5

Note 3: for pad layout refer to Yamaichi data sheet