

A close-up photograph of a green printed circuit board (PCB) with intricate silver traces and components. A silver metal padlock is placed diagonally across the board, symbolizing security. A red horizontal bar is overlaid on the lower portion of the image, containing white text.

TESSY Training Preparation

prior to the days of the training

1

Notebook and Tools

2

Download and Installation of TESSY

3

License Request and Installation

4

Verifying Installation and Access Rights

1

Notebook and Tools

2

Download and Installation of TESSY

3

License Request and Installation

4

Verifying Installation and Access Rights

- Notebook
 - Windows 7 / 8 / 8.1 / 10 - 64bit
 - 2GB RAM
 - 1GB ROM
 - CPU 1,5GHz

- Excel

- Any kind of PDF viewer

- Access to external USB-Stick or web access for downloads

- Helpful: Mouse

1

Notebook and Tools

2

Download and Installation of TESSY

3

License Request and Installation

4

Verifying Installation and Access Rights

Download and Installation

- Local admin rights are recommended for installation of TESSY
- TESSY might be available as disk or download from:

<https://www.hitex.com/index.php?id=749>

- Please take care about latest version and patch.
- Follow the installation with the default settings.
- In case of any questions see user manual:
Installation and Registration, 1.2 Setup

1

Notebook and Tools

2

Download and Installation of TESSY

3

License Request and Installation

4

Verifying Installation and Access Rights

- TESSY gets a license from a floating license server (FLS).
This FLS may run
 - individually on the target notebook providing one license to this notebook (e.g. trainings)

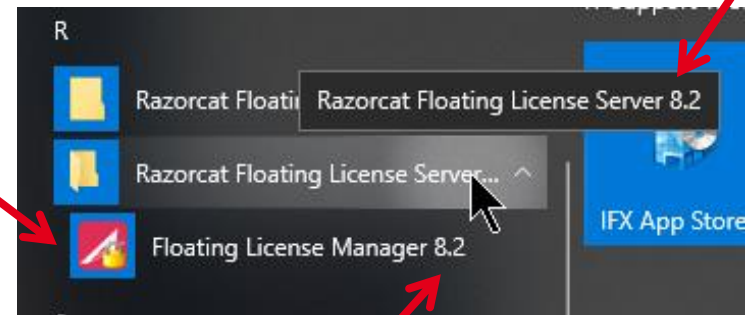
- or**

- somewhere in a network providing several licenses to several notebooks. Each notebook needs access to the server via the network.

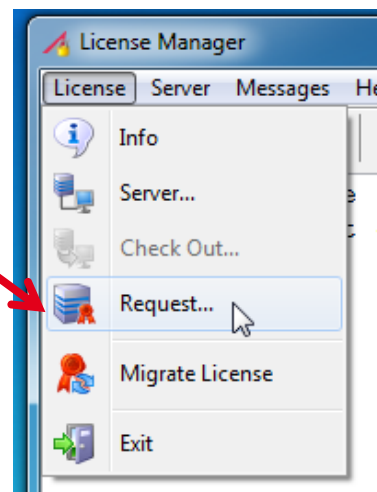
- The FLS provides a **Registration ID** which is needed for the license process.

Individual License Request

- via support
 - Start **Floating License Manager** from Windows Start Buttom below "R": **latest version (v 8.2)**



- Select **License / Request:**



Individual License Request

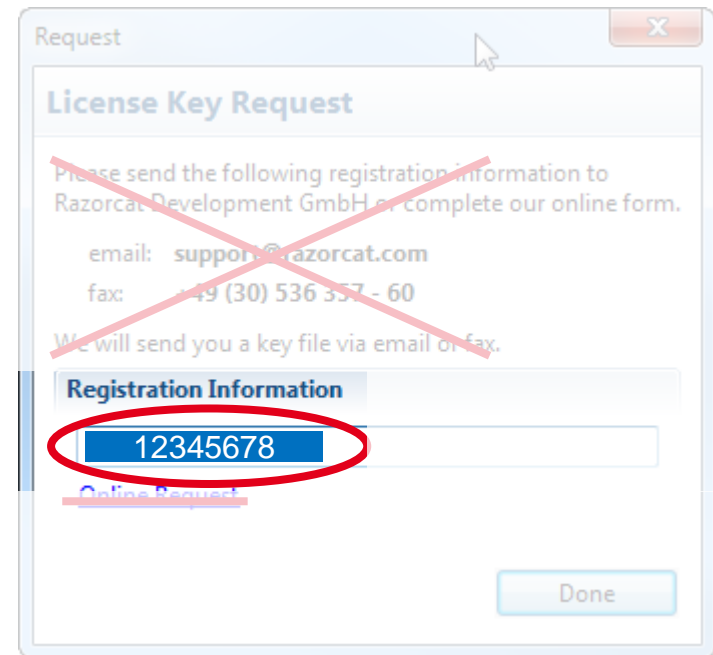
- Copy the Registration Information,
close the window without
online request

and make a license request via
support case at the Hitex Web

Please attach
the Registration Information

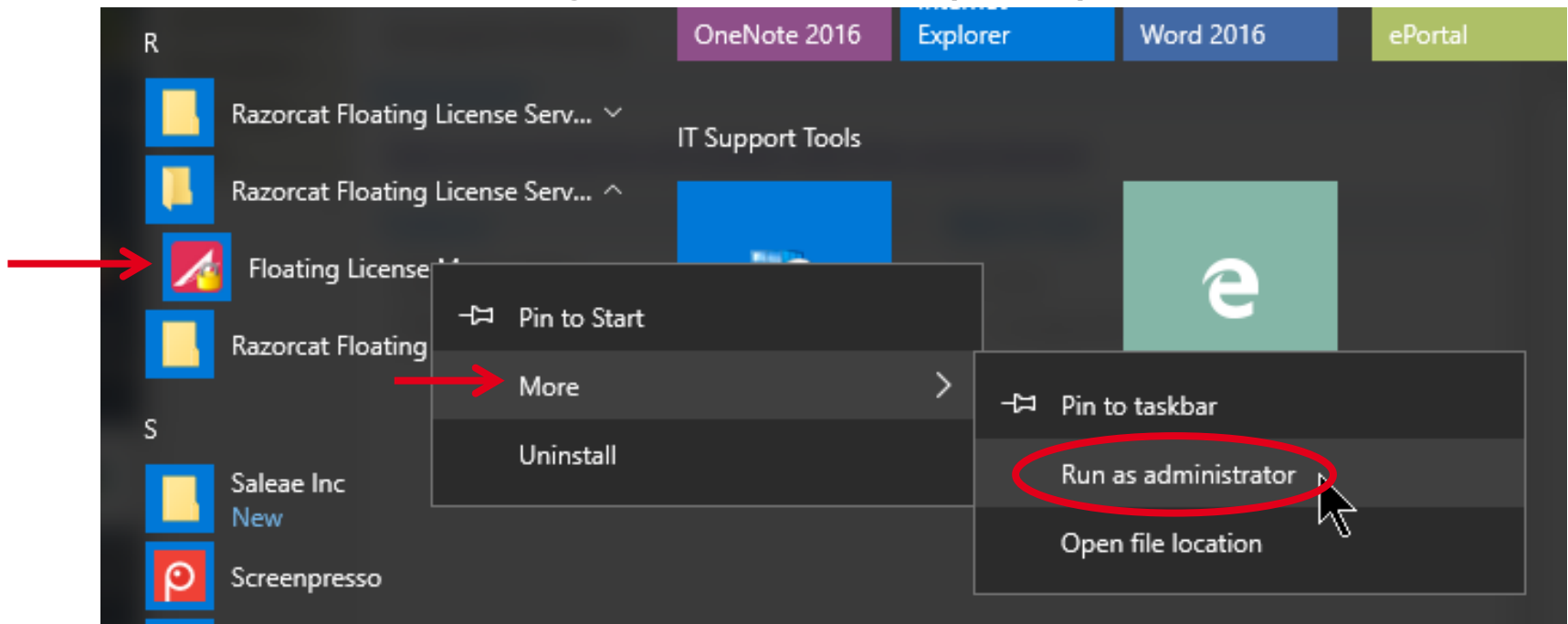
<https://www.hitex.com/company/support/support-form/>

- You will get a license file "RegistrationID.txt" via email 1-2
working days before the training starts



Individual License Request

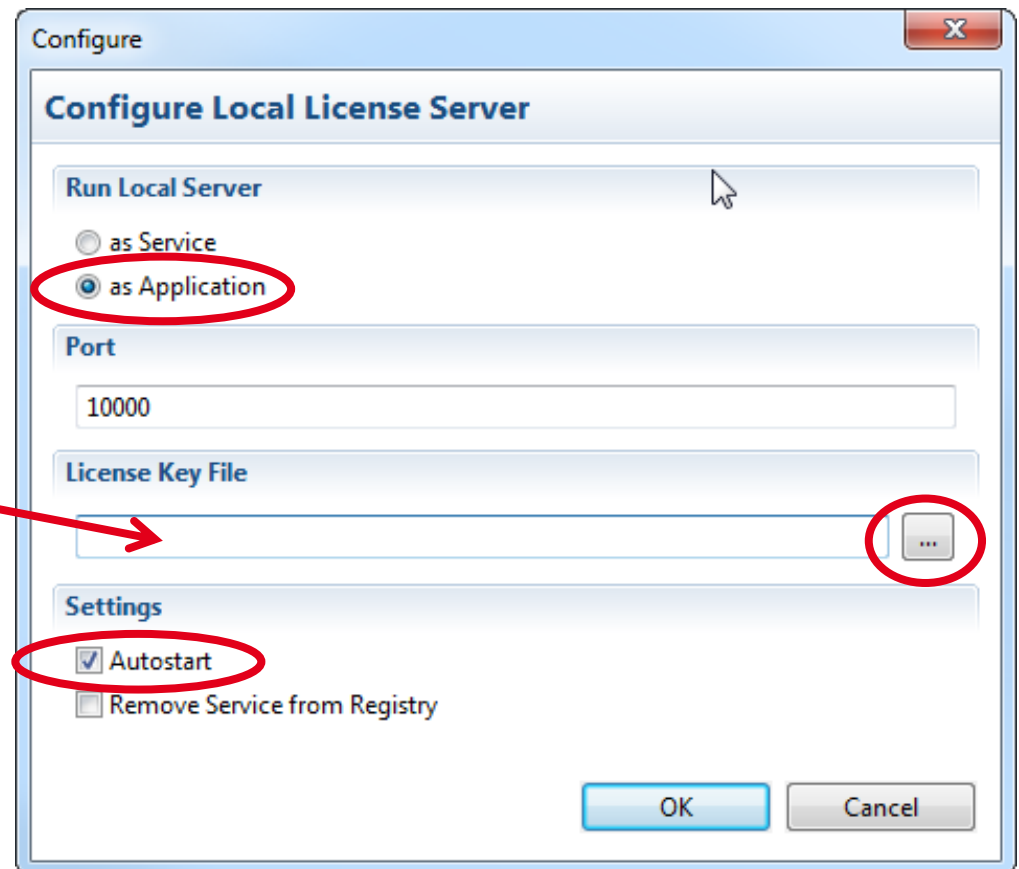
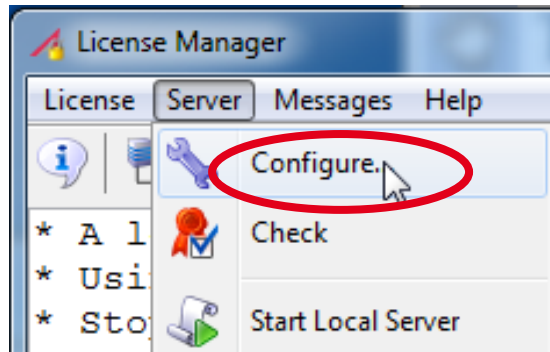
- After receiving the **license.txt** file
 - Copy the file to your notebook and start the latest version
 - Start the license manager latest version (**v 8.2**)



Since v 8.2 local admin rights are no longer needed for FLS modification

Individual License Request

- Modify the server configuration

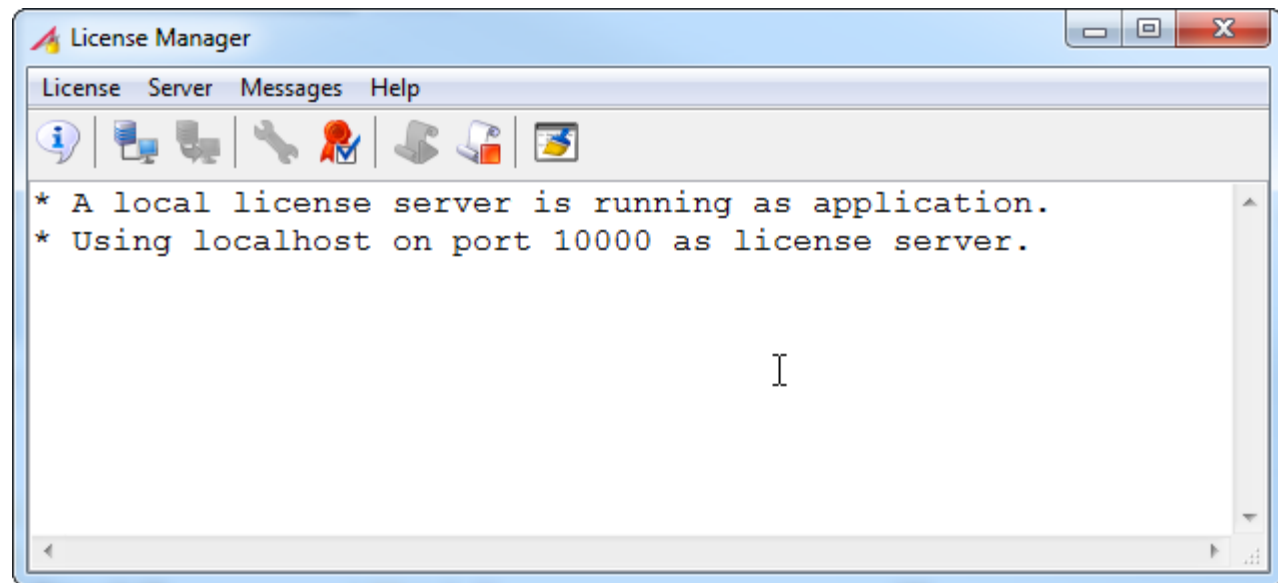


browse to your file

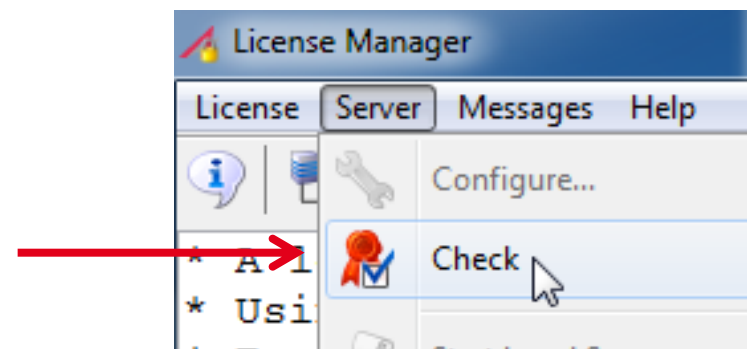


Individual License Request

- After starting the server the display shows the running server



- **Server / Check**
gives more detailed information



1

Notebook and Tools

2

Download and Installation of TESSY

3

License Request and Installation

4

Verifying Installation and Access Rights

Verifying Installation and Access Rights

- It is highly recommended to check the access rights after installation.
- Therefor you can use an own project or
- use the **welcome project** provided separately as encrypted file including description and project files

<https://www.hitex.com/company/support/downloads/training/>

Learn more about Hitex at www.hitex.com